

THE GREENIE

S
A
T
U
R
D
A
Y

N
O
V
.

19

1
9
3
2

Price
25c



Sewanee vs. Tulane

The
**Tulane University of
Louisiana**

NEW ORLEANS



*The University Embraces the Following
Departments:*

The College of Arts and Sciences
The H. Sophie Newcomb Memorial College for Women
The College of Engineering
The Graduate School
The College of Law
The School of Medicine
The School of Pharmacy
The Graduate School of Medicine
The Dental Clinic
The College of Commerce and Business Administration
The Courses for Teachers
The Department of Middle American Research
The School of Social Work
The Summer Schools

For Catalogue Address:

**Registrar of the
Tulane University of Louisiana**

GIBSON HALL, NEW ORLEANS



**FRERET
SERVICE STATION**

ROBERT AND FRERET STREETS

Free Tire and Battery Service

Cars Washed—Certified Lubrication

Phone Uptown 9116

NEW ORLEANS, LA.



**ON THE FIELD
AND IN THE
GRANDSTAND**

Not only will Spalding Equipment be seen in actual play on the majority of college gridirons, but also among the spectators as well. Quality and style have not been sacrificed in Spalding sweaters, golf hose, leather jackets and accessories.

The Spalding J5 Football is the ONE ball used in all important contests. Watch it in action.

A.G. Spalding & Bros.

130 Carondelet Street

HOTEL LAFAYETTE

HEADQUARTERS

for

TULANE FOOTBALL TEAM

In Kentucky on November 12



The LAFAYETTE is Lexington's newest and finest hotel, every room having private bath, circulating ice water, outside exposure and every modern convenience. In the heart of the famous Bluegrass region.

LEN SHOUSE, JR., Manager.

Announcing . . .

A NEW POLICY

In tune with the changing times, we are happy to offer reductions in our room and restaurant rates; and as an added convenience, our guests will now enjoy free car storage.

ROOMS
With Bath
As Low As
\$2.50
a Day

MAIN
DINING
ROOM
Dinner, \$1.25
Lunch, 50c

The
Roosevelt
NEW ORLEANS ■

In Holmes Men's Store ---You Buy

QUALITY at a PRICE

The famous
Worsted-Tex Suit

Now \$30

The favored
Knit-Tex Overcoat

Now \$25

Before and After the Game—
Dine in Holmes Restaurant

Ready for You at Holmes—
Tulane Colors in Ribbons,
Badges, Pennants

Holmes Men's Store—Use the Separate
Entrance on Bourbon Street

Holmes

NEW ORLEANS

Canal Street MAin 1000

Tulane 1932 Football Auto-
mobile Stickers Are Now
Ready in Holmes Men's
Store

ASK FOR YOURS TODAY

Playing the Game!

Playing fairly, squarely—giving you our very best consistently and unfailingly, living up to every rule of good sportsmanship. Everyone who has had dealings with us at any time in our 32 years of business will tell you that the name Gus Mayer Co. stands for PLAYING THE GAME.



The establishment of a Campus Shop at 1041 Audubon Street—just off the Newcomb Campus—is just another manifestation of Gus Mayer Company's desire to better serve its customers . . . to give uptown residents and busy college students an opportunity to get merchandise renowned for its superiority at their own convenience.

But remember, whether you buy at our Campus Shop or our Canal Street store, Gus Mayer Company gives best at all times. Its leadership in style, in quality, in value can be depended upon.

GUS MAYER COMPANY PLAYS THE GAME!

Main Store
823 Canal Street

GUS
MAYER
CO. LTD.

Campus Shop
1041 Audubon Street
(Julie's Tea Room)

Sewanee

FOOTBALL ROSTER

<i>No.</i>	<i>Name</i>	<i>Position</i>
21—	George Hall	Guard
22—	DuBose Egleston	Center
23—	Pick Butler	Center
24—	Chas. Underwood	Back
25—	Edwin Hatch	Back
28—	Ralph Ruch	End
29—	Eugene McLure	Back
30—	Fain Cravens	Back
31—	Sam King	Guard
32—	Felix Nelson	Tackle
33—	Joe Kellerman	Back
34—	James Johnson	Back
35—	David Clark	Back
36—	Henry Hanson	Tackle
38—	Joe Gee	Back
39—	Alex Wellford	Back
40—	Floyd Hayes	Tackle
41—	Croom Beatty	End
42—	Laurie Thompson	Guard
43—	John Kirby Smith	Tackle
44—	Jack Morton	End
45—	Kenneth Clark	Guard
46—	Henry Holland	Guard
47—	Woodrow Castleberry	Guard
49—	Harry Graham	Tackle
51—	Martin Heathman	End
58—	Albie Thompson	End
59—	Joe Robinson	Back
60—	Jack Lawrence	End

Tulane

FOOTBALL ROSTER

<i>No.</i>	<i>Name</i>	<i>Position</i>
18—	Don Zimmerman, Jr.	Back
39—	Pete Menge	Back
40—	Charles Kyle	End
41—	James Hodgins	Back
42—	Farrel Thomas	Back
43—	Milto Phillips	End
44—	George Westfeldt, Jr.	End
45—	Augustus Clarke	End
46—	Joe Loftin	Back
47—	Claude Simons, Jr.	Back
48—	Homer Robinson	Guard
49—	Will Pat Richardson	Back
50—	Floyd Roberts	Back
51—	Clave E. Gill	Back
52—	Francis Payne	Back
53—	William F. Schroeder	Guard
54—	Winnie P. Lodrigues	Center
55—	Doyless Hill	Center
56—	Elson Delaune	End
57—	John McDaniel	Back
58—	Louis Boasberg	Tackle
59—	John J. Read	Center
60—	Harold Lemmon	Back
61—	Gene Simon	Guard
62—	George Tessier	Guard
64—	John Bruno	Back
65—	Richard Hardy	End
67—	Cromwell Page	Tackle
68—	Richard Bankston	Tackle
69—	Robert Tessier	Tackle
70—	Robert L. Simon	End
72—	John Scafide	Guard
73—	Thomas Cunningham	Tackle
74—	Charles Calhoun	Guard



DON ZIMMERMAN
Tulane Halfback

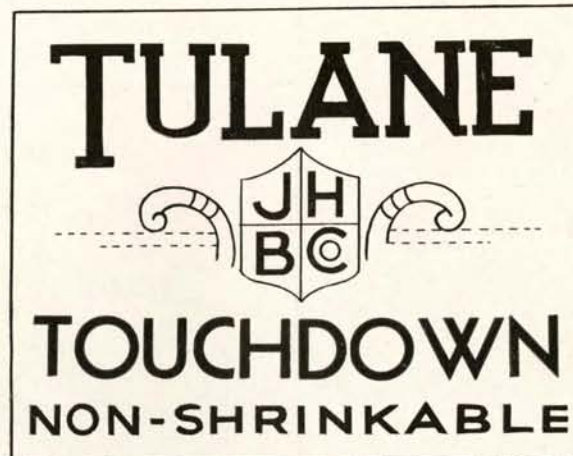
Introducing . . .

TO DIXIE'S FOOTBALL FANS . . .
THE

SMART . . .

AND

STYLISH . . .



CHOICE

OF

PLAYERS

SHIRT

ON SALE AT THE BEST STORES

Made in New Orleans By

J. H. BONCK COMPANY, INC.

THE O'SHEA FOOTBALL JERSEY

Has Been Used by the Following Schools:

U. S. Naval Academy
U. S. Military Academy
Princeton
Tulane
Syracuse
Rutgers
Carnegie Tech
Penn State
Georgia Tech

Chicago
Northwestern
Notre Dame
Kansas State
Florida
Wisconsin
Minnesota
Illinois
Michigan

Indiana
Iowa
Texas
Missouri
Kansas
Pennsylvania
Ohio State
Virginia
Georgia

and many others!

WHAT GREATER RECOMMENDATION COULD YOU FIND?

O'SHEA KNITTING MILLS

2414 N. SACRAMENTO AVENUE, CHICAGO, ILLINOIS



Cheer 'em! Cheer 'em

Those

17.75

COLLEGIATE SUITS

MAYER ISRAEL'S

Where Tulane Goes for Clothes

Terry & Juden, Ltd.

141

CARONDELET STREET

Men's Furnishings Shirts to Order

Uniforms of All Kinds to Order

TULANE GYMNASIUM

Purified by Products of

Paramount Chemical Co.

523 Natchez Street

RAMELLI COAL CO.

(RUDOLPH RAMELLI, Inc.)

COAL AND COKE

LAUNDRY SUPPLIES

Phones RAYmond 6188-6189

Fuel
Oils

COAL

ORIGINAL RED ASH ANTHRACITE COKE

ROBT. P. HYAMS COAL CO.

Phone JACKson 1700

Albert O. Schwartz, Inc.

601 Carondelet Street

1422 Cleveland Avenue

*Storage, Washing, Greasing, Tires and
Tire Repairs*

Phone MAin 3942 — Phone RAYmond 5580

Madison Lumber Co.

LUMBER—MILLWORK

BUILDING MATERIAL

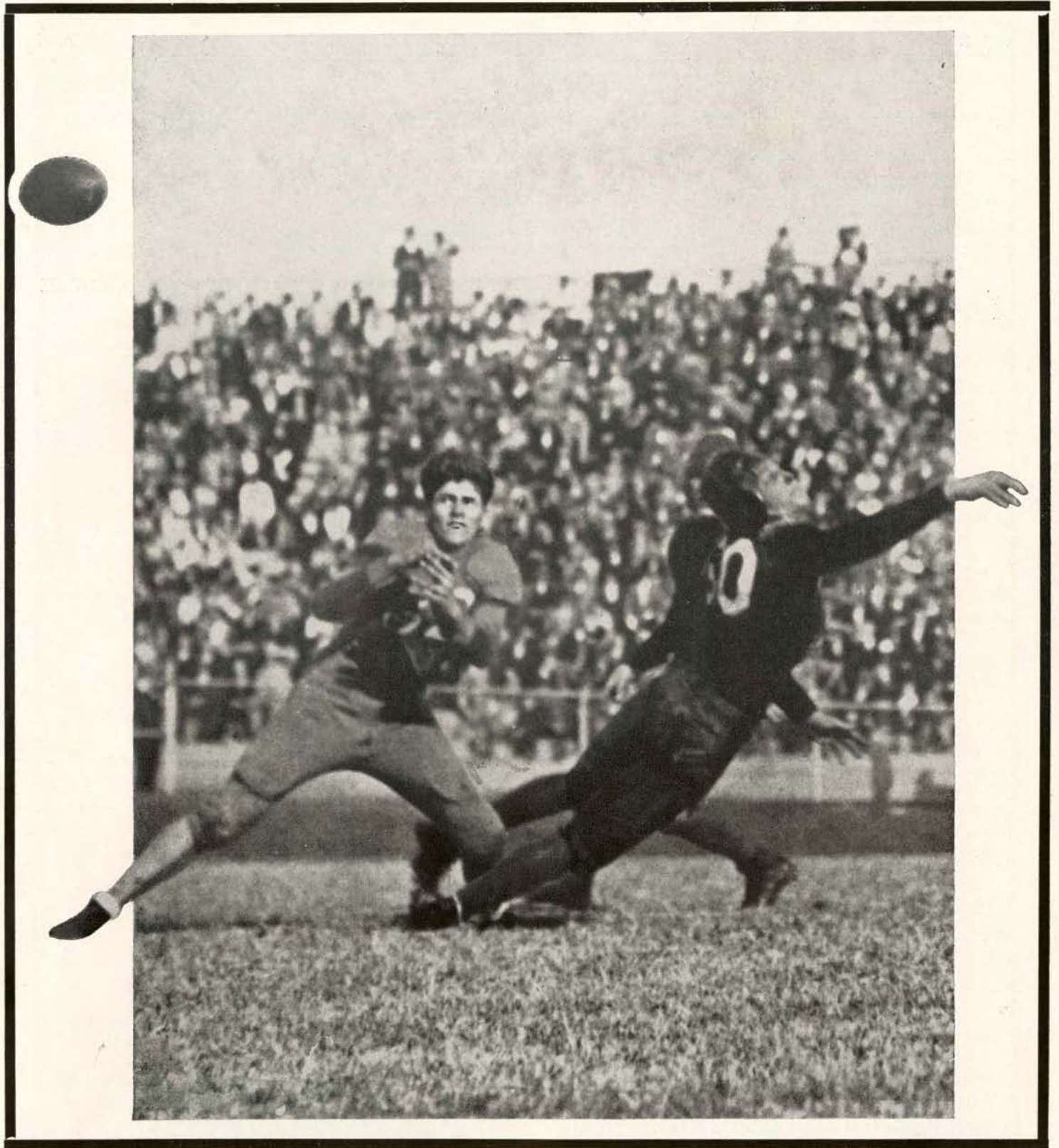
721 S. Claiborne Ave.

RAYmond 1363

IT WON'T BE LONG—SOON AS SEWANEE SWEARS OFF—
You'll Meet the Crowd at

Katz & Besthoff

FOUNTAINS



THE OLD MASTER

Lefty Haynes Great 1931 Pass Receiver in a Classic Pose

THE GREENIE

Vol. 2

NOVEMBER 19, 1932

No. 6

The Greenie, Official Souvenir Football Program of Tulane University and Gridiron Magazine, published for each home game of the Green Wave.

Price Per Copy, 25c

{Mail order requests should be addressed to The Greenie, Tulane Athletic Department, P. O. Station 20, New Orleans, and should be accompanied by 30c in stamps to cover cost of the Magazine and mailing.}

For advertising rates call Walnut 0232 or write The Greenie, Advertising Department, Tulane University.

On To Baton Rouge

● Thousands of New Orleans football fans will be at Baton Rouge next Saturday afternoon to see the Green Wave and Louisiana State Tigers renew their ancient rivalry which dates back to 1893.

The game this year promises to be one of the most colorful ever played between the two institutions. The Tigers will go into the game without a defeat in the Southern Conference while the Wave has suffered but one defeat in the South since October, 1928.

A capacity crowd of 30,000 will see the game. That is virtually assured. The L. S. U. authorities as early as last Tuesday notified Tulane that they had sold all reserved seats there and asked for 3,000 more of Tulane's allotment. Dr. Wilbur C. Smith, Tulane athletic director, said, however, that he would return no tickets until Tuesday night of this coming week.

The Tulane side tickets are on sale at 205 St. Charles Street.

Welcome Sewanee

Tulane welcomes a noble institution today. The Sewanee Purple is always a pleasant visitor to Tulane and its great spirit is highly regarded.

Gordon Clark, graduate manager of athletics is a fine gentleman and has the admiration and respect of the Tulane authorities. His team is a true representative of a fine institution.

PAST SCORES OF TULANE—L. S. U. GAME

1893—Tulane	34;	L. S. U.	0
1895—Tulane	4;	L. S. U.	8
1896—Tulane	0;	L. S. U.	6
1898—Tulane	0;	L. S. U.	37
1899—Tulane	0;	L. S. U.	38
1900—Tulane	29;	L. S. U.	0
1901—Tulane	23;	L. S. U.	0
1904—Tulane	5;	L. S. U.	0
1905—Tulane	0;	L. S. U.	5
1911—Tulane	0;	L. S. U.	5
1912—Tulane	3;	L. S. U.	21
1913—Tulane	0;	L. S. U.	40
1914—Tulane	0;	L. S. U.	0
1915—Tulane	0;	L. S. U.	12
1916—Tulane	14;	L. S. U.	14
1917—Tulane	28;	L. S. U.	6
1919—Tulane	6;	L. S. U.	27
1920—Tulane	21;	L. S. U.	0
1921—Tulane	21;	L. S. U.	0
1922—Tulane	14;	L. S. U.	25
1923—Tulane	20;	L. S. U.	0
1924—Tulane	13;	L. S. U.	0
1925—Tulane	16;	L. S. U.	0
1926—Tulane	0;	L. S. U.	6
1927—Tulane	13;	L. S. U.	6
1928—Tulane	0;	L. S. U.	0
1929—Tulane	21;	L. S. U.	0
1930—Tulane	12;	L. S. U.	7
1931—Tulane	34;	L. S. U.	7

Recapitulation

Tulane won 14 games
L. S. U. won 12 games
Ties, 3

TULANE
Cooperative Book Store

●
"See us for your every need"
●

Open 7:30 A.M.—10:30 P.M.

BASEMENT, GIBSON HALL

Did YOU send HER a CORSAGE
to WEAR to the GAME?

●
We Supply Flowers for Campus Occasions
●

J. C. QUINETTE
The Floral Shop

1345 Lowerline St. at Willow Phone WA. 0451

Just Five Blocks up Willow St. from the Stadium

GOOD MEATS BUILD MUSCLE

Best Selected Western Meats
●

MAILHES BROS.

Jefferson Market -:- Phone UPtown 1143

OKAY TULANE!

Guedry's Barber Shop

"Where Cleanliness Is Paramount"

4620 Freret Street

UPtown 8484

HAUSMANN, INC.

New Orleans' Leading Jewelers
● ● ●

Special Department for College and Fraternal Jewelry

A. W. Hyatt Stationery Co., Ltd.

Stationers — Printers

407 Camp Street

RAymond 6129

A. BALDWIN & CO.

Sporting Goods of All Description

132 CAMP STREET

"As Dependable as Your Druggist"

Means

CIRE'S PHARMACY

Hurst and Webster

UPtown 0106

PROBABLE LINE-UP
SEWANEE

No.	Name	Position
32	Nelson.....	Left End
44	Morton.....	Left Tackle
45	Clark, K.....	Left Guard
22	Egleston.....	Center
42	Thompson.....	Right Guard
36	Hanson.....	Right Tackle
60	Lawrence.....	Right End
47	Castleberry.....	Quarter Back
39	Wellford.....	Left Half
30	Cravens.....	Right Half
38	Gee.....	Full Back

(For full Roster see page 5)

Referee—Cheves (Georgia)
Umpire—Pitts (Auburn)

PROBABLE LINE-UP
TULANE

No.	Name	Position
43	Phillips.....	Left End
73	Cunningham.....	Left Tackle
48	Robinson.....	Left Guard
59	Read.....	Center
61	Simon, G.....	Right Guard
68	Bankston.....	Right Tackle
65	Hardy.....	Right End
57	McDaniel.....	Quarter Back
47	Simons.....	Left Half
41	Hodgins.....	Right Half
60	Lemmon.....	Full Back

(For full Roster see page 5)

Head Linesman—Tyson (Idaho)
Field Judge—Haxton (Ole Miss)



Chesterfield

The cigarette that's **MILDER**
The cigarette that **TASTES BETTER**

After the Game . . .

Follow the Crowd to

**BROADWAY
PHARMACY**

•
Broadway and Maple
•

H. C. RICHARDS
Proprietor

ARTISTS · ENGRAVERS



MAin
1443
1444

**NEW ORLEANS ENGRAVING
& ELECTROTYPE CO.**
509 IBERVILLE STREET NEW ORLEANS, LA.

**New Orleans
Corrugated
Box Co.**

Incorporated

•
Gaylord Boxes

•
Fibreboard Boxes

•
Telephone GALvez 2154

•
New Orleans, La.

AND

Coca-Cola

was at TULANE STADIUM

The Original
**David Bernhardt Paint
Company**
LIMITED

317-21-23 Camp St., New Orleans
Phones: Raymond 5279-5270
The Largest Paint and Window Glass
House in the South
WE HAVE NO BRANCHES

TRAVIA'S
A Good Restaurant
*In the Heart of
Collegetown*

6314 Hurst Uptown 2736

For Economical Heating
NEOLA COALS
:::
**Gulf Coal & Coke
Co., Inc.**

Frank D. Costley, President

**Southern Specialty
Sales Co., Inc.**

Complete Lawn, Garden and
Golf Course Maintenance
Equipment and Repairs
1726-28 Carondelet St.
RAYmond 3694

**Certified CREMO
5c**

*The Good 5c Cigar That
America Needed*

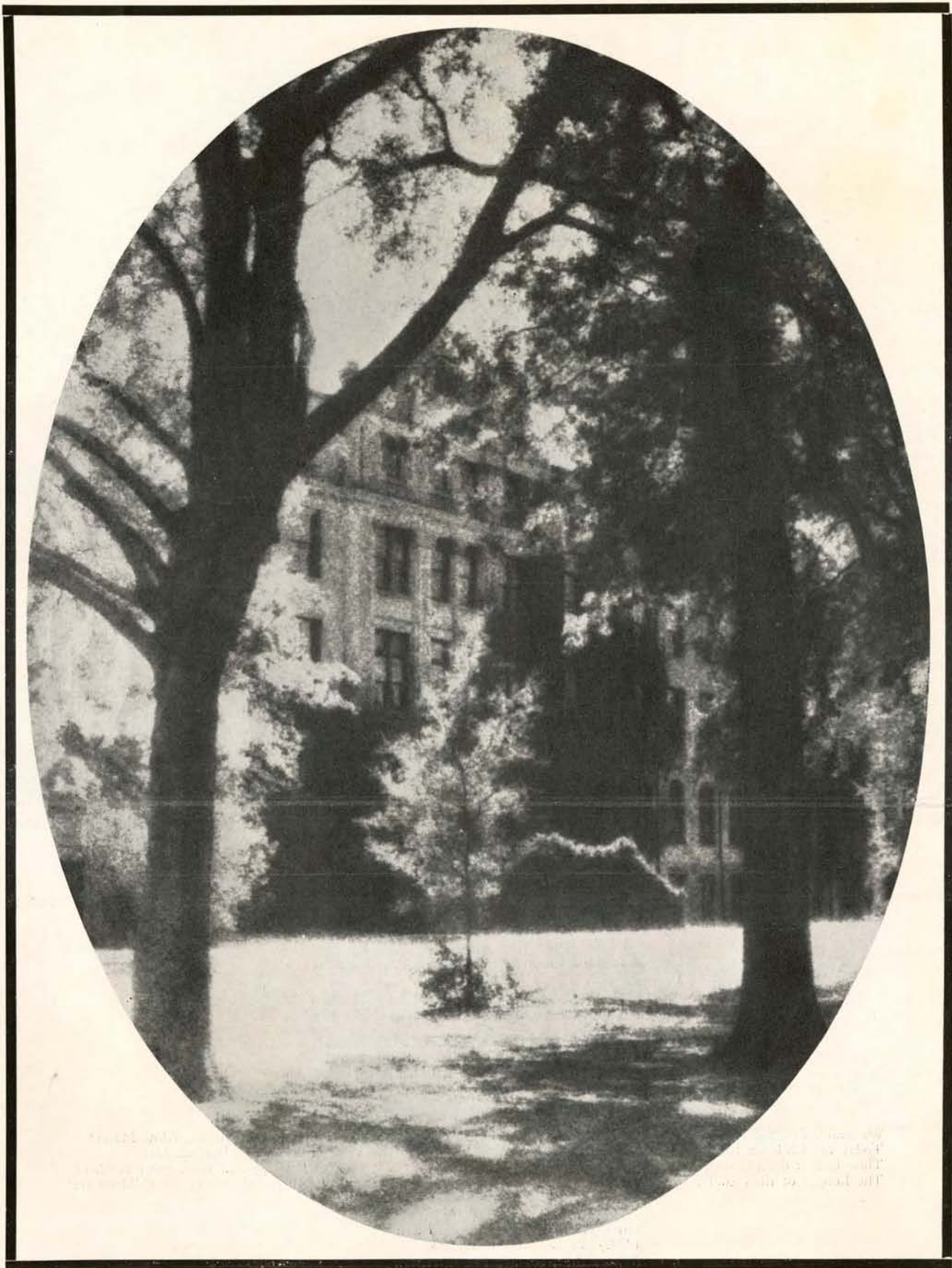
Sold by All Dealers

*Roses . . .
The Sweetest Girl . . .
Flowers . . .*

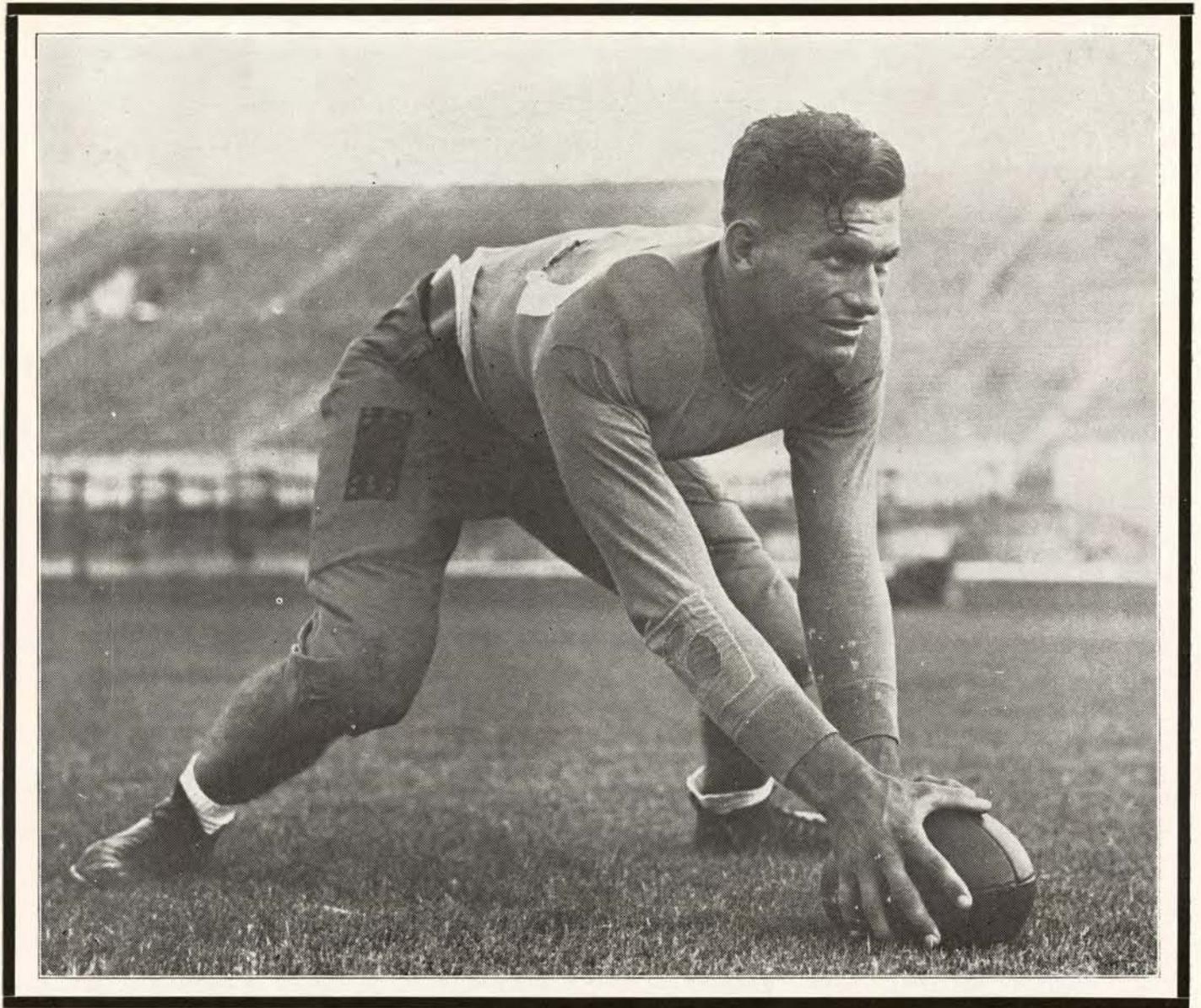
Give her a corsage for the game

Carrollton Florist

GRUNEWALD CHOPIN
WALnut 3333
1332 S. Carrollton Ave.



Tulane Campus View



WINNIE LODRIGUES
Tulane Center

ALMA MATER

Sing these words as Tulane's Alma Mater is played

I.

We praise thee for thy past, O Alma Mater!
Thy hand hath done its work full faithfully!
The incense of thy spirit hath ascended
And filled America from sea to sea!

II.

We praise thee for thy present, Alma Mater!
Today thy Children look to thee for bread!
Thou leadest them to dreams and actions splendid!
The hunger of their soul is richly fed!

III.

We praise thee for thy future, Alma Mater!
The vista of its glory gleameth far!
We ever shall be part of thee, great Mother!
There thou wilt be where e'er thy children are!

CHORUS:

Olive Green and Blue, we love thee!
Pledge we now our fealty true
Where the trees are ever greenest,
Where the skies are purest blue!
Hear us now, O Tulane, hear us!
As we proudly sing to thee!
Take from us our hearts' devotion!
Thine we are, and thine shall be!

"Green Wave and

BROWN'S
Velvet
ICE CREAM
MADE BY NEW ORLEANS ICE CREAM CO.

●
Both Champions!

●
New Orleans
Ice Cream Co.

1320-1322 Baronne Street
New Orleans

DUNLAP

Sporting Goods Co., Inc.

ATHLETIC SUPPLIES

GOLF TENNIS
SPORT CLOTHING
GUNS AMMUNITION
FISHING TACKLE

● ● ●
DISTRIBUTORS—

A. J. Reach, Wright & Ditson Co.

● ● ●
158 Carondelet St.

MAin 6660

Champion Knitwear Products

for

THE CHAMPIONS!

The Green Wave wears Champion Knitted
Wear

Champion Knitwear Mills

ROCHESTER, N. Y.

● ● ●
Claibourne Andrews, Phone GAlvez 8471

Louisiana Representative

OLIVE AND BLUE

in

FLOWERS AND RIBBONS

for

SPONSORS AND ROOTERS

from the

AVENUE FLORIST



EICHLING'S AVENUE FLORAL CO.

Phone JAckson 3170

HISTORICAL TID-BITS

The first declaration of independence issued by the American colonists against the decrees of a foreign sovereign was promulgated by the French patriots of New Orleans in 1766, who were appealing to the French king to defend them against the Spanish yoke. The author of the New Orleans proclamation was Nicholas de Lafreniere. It was signed by the thirteen members of the Superior Council of Louisiana and was framed in almost the exact language of an impassioned speech of Lafreniere, delivered before the council.

It was delivered to the King of France, Louis the Sixteenth. The attempted rebellion of the French colonists of Louisiana was caused by the cession of the colony to Spain, and by the subsequent tyrannical assumption of authority by the Spanish governor, Ulloa.

The French proclamation fell upon stony ground. The Frenchmen of Louisiana had not yet passed through the fiery furnace of revolution. Lafreniere and four compatriots were shot in the center of the barracks of the Spanish Commanderie. They refused to have their eyes bandaged and died like heroes. As the shots rang out, the screams of their wives and children rang out. They had been praying with the Ursuline convent sisters.

The execution was ordered by Alexander O'Reilly, the Irish-Spanish governor who had drawn the compatriots to him after a hypocritical display of friendship and that amnesty would be granted.

* * * *

The "Fighting Bishop of the Confederacy," Leonidas Polk, who was the first Episcopal bishop of the diocese of New Orleans was a graduate of West Point and a brilliant engineer.

He, it was, who urged Jefferson Davis to abandon the campaigns in Virginia and concentrate on the possession of the Mississippi River, asserting that whoever commanded that artery dominated the continent. He urged his plans in many letters to President Davis but his foresight as a military strategist

and engineer was not appreciated until it was too late.

Bishop Polk was a man of large private fortune. The family came from Raleigh, N. C., and his father had been a famous officer of the Revolution and was author of the Mecklenburg Declaration of Independence, issued before the Jeffersonian document.

There is evidence to support the fact that Jefferson may have been influenced by the language of the Mecklenburg declaration. Had there been telegraphic communication in those days, it is possible that the Mecklenburg declaration would have been promulgated by the Republic.

Bishop Polk's plantation home is situated just above the beautiful little city of Thibodeaux on a picturesque branch of Bayou Lafourche.

The property is well preserved.

* * * *

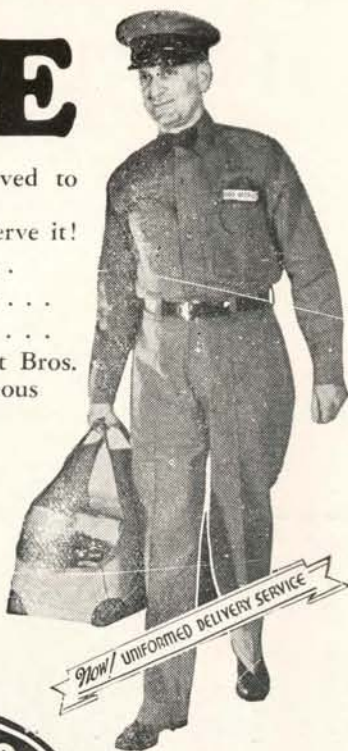
It is a fact little known that the West Florida parishes of Louisiana were once organized into an enterprising young Republic. The present West Florida parishes had received a strong intermixture of English Celtic stocks during the English regime in 1763 from Maryland, Kentucky and Virginia. They aroused the French stock against the Spanish. Isolated from other Americans and despairing of aid, they rebelled successfully against the Spaniards and set up a government of their own.

They chose St. Francisville, below Baton Rouge for the capital, elected a president and small congress and were ready to go ahead when the American government officials arrived to take possession of the baby republic. The little republic had even adopted a flag, a banner consisting of a deep blue field with one silver star in the center. Prominent among the leaders in the movement were the members of the Bankston family who had migrated from Maryland. Dick Bankston of the Tulane team is a lineal descendant of this family.

—(Flores Ford Meagher).

ICE

Wherever Ice is served to
Tulanians . . .
BATT BROS. . . . serve it!
On the Campus . . .
In the Fraternities . . .
To the University . . .
Ice delivered by Batt Bros.
Uniformed courteous
service!



Phones:
Uptown 8148
Uptown 3718-J



*It's Smart
to Serve
PLENTY
of Crystal Clear
Ice*

P O R T E R ' S

*"Where Style and
Quality Predominate"*

in

Everything Men Wear

Despite the high guaranteed quality, Porter prices are no higher than you are asked to pay at admittedly inferior stores . . . please check this by personal comparisons!

Porter's

CARONDELET and GRAVIER

! IMPORTANT ANNOUNCEMENT !

PIX-UP

A Carefully Compounded Preparation to Relieve
H E A D A C H E

Sold at All Katz & Besthoff Fountains

STOP!

TICKETS

LOOK!

—FOR—

TULANE---L. S. U. GAME

Now on Sale at 205 St. Charles Street

SMOKE

EL TRELLES

CIGARS

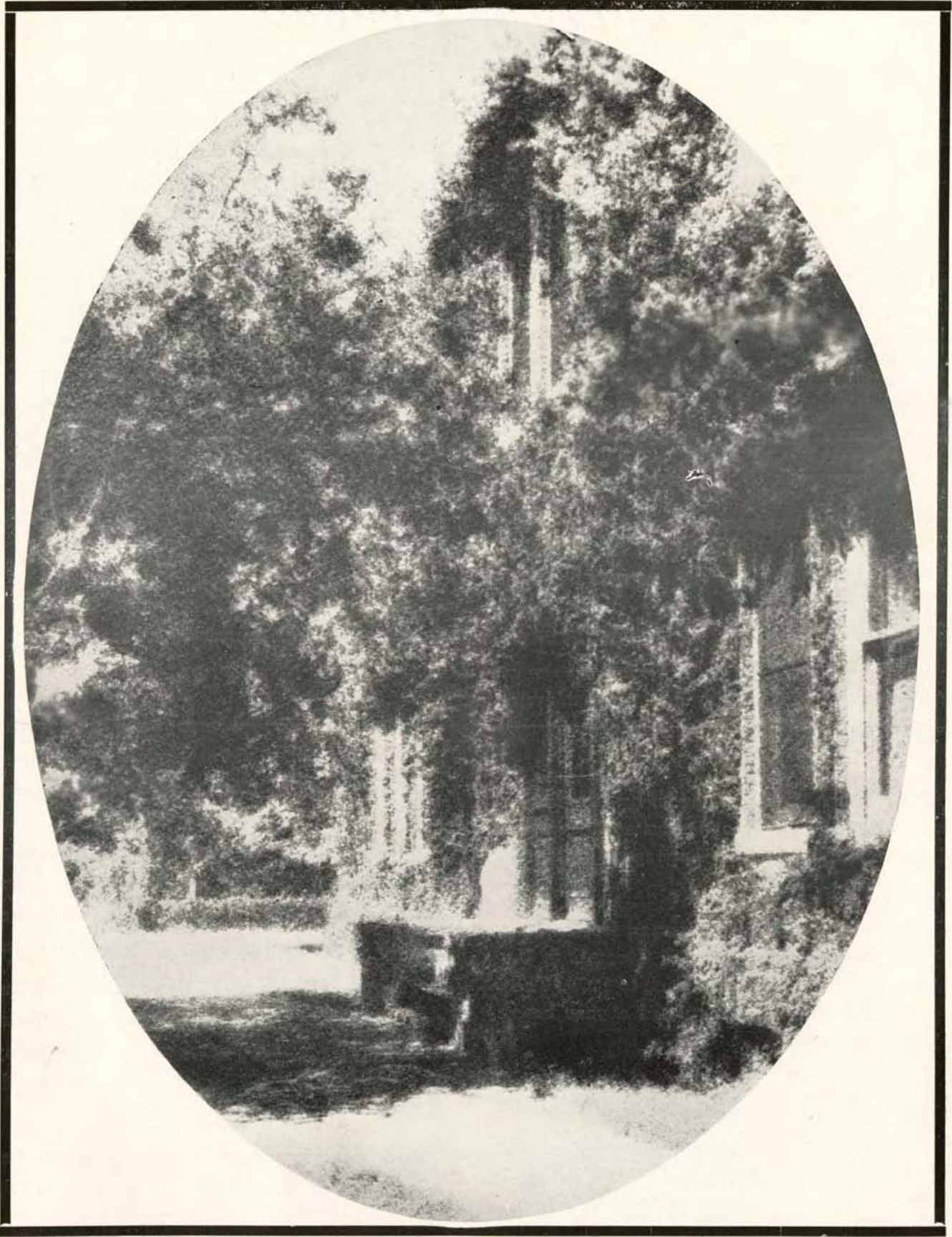
THE
American Printing
Co., Ltd.

*Publications, Catalogs,
School Annuals, Briefs,
Commercial Printers*

535-37 POYDRAS STREET
New Orleans



Phone JACKSON 2600



Tulane Campus View

The St. Charles

NEW ORLEANS



The ST. CHARLES is located in the heart of the business and amusement centers. Accommodating 1,000 guests. Special rates during Football Season.

First class rooms with bath, \$2.50 single, \$4.00 double.

ALFRED S. AMER
Vice-Pres. and Gen'l Mgr.

JAS. "PAT" O'SHAUGHNESSY
Manager.



**NEVER PARCHED
NEVER TOASTED**

CAMELS are always FRESH!

SWITCH to Camels and learn the mildness of a fresh, cool-burning cigarette. A blend of choice Turkish and mellow, sun-ripened Domestic tobaccos, Camels are never parched or toasted. That's why we say smoke them for one day, then leave them—if you can.

R. J. REYNOLDS TOBACCO COMPANY, *Winston-Salem, N. C.*

Don't remove the Camel Humidor Pack—it is protection against perfume and powder odors, dust and germs. Buy Camels by the carton for home or office. The Humidor Pack keeps Camels fresh